

## Wraparound Effectiveness

Comparing Traditional Services to Wraparound  
Nevada - 2004

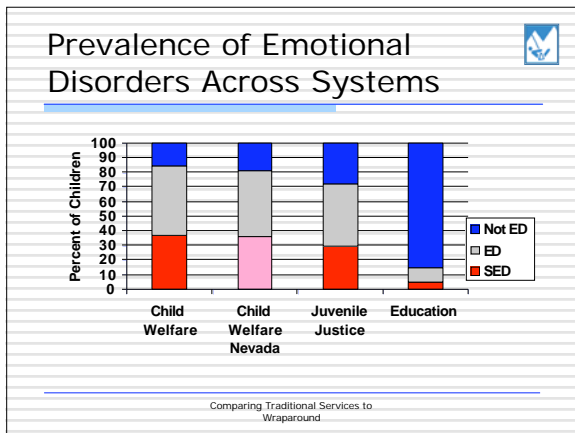
Christa Peterson, Ph.D.  
Jim Rast, Ph.D.

## Assembly Bill 1 Which:

Transfer of Certain Child Welfare Duties from DCFS to Clark and Washoe Counties

and establishes

1. The Legislative Committee on Children, Youth and Families
2. Local Mental Health Consortium
3. A Children's Mental Health Initiative for children in the Child Welfare System



## Who Was Screened?

2097 Child Sample of Clark County Elementary Students from 17 schools

- 409 Kindergarten Students
- 262 First Grade Students
- 266 Second Grade Students
- 310 Third Grade Students
- 430 Fourth Grade Students
- 420 Fifth Grade Students

How Were Children Selected

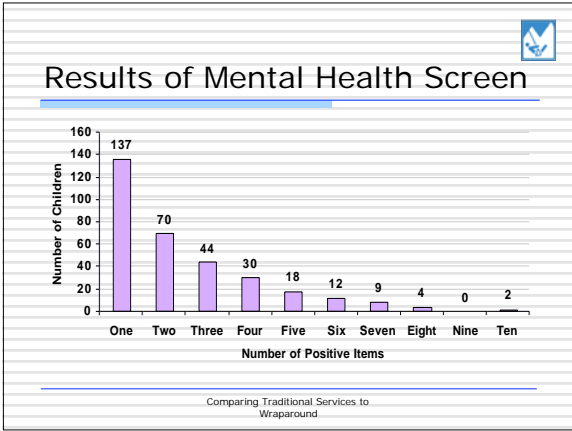
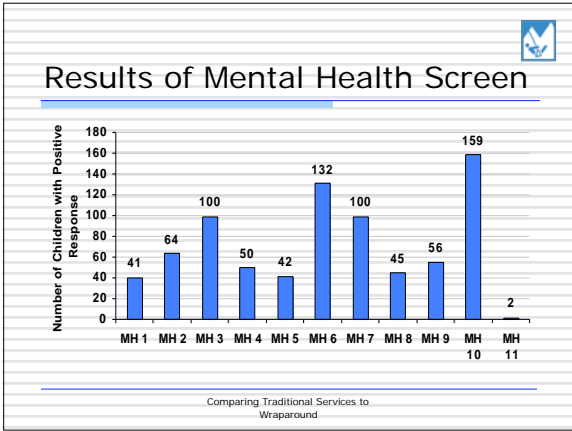
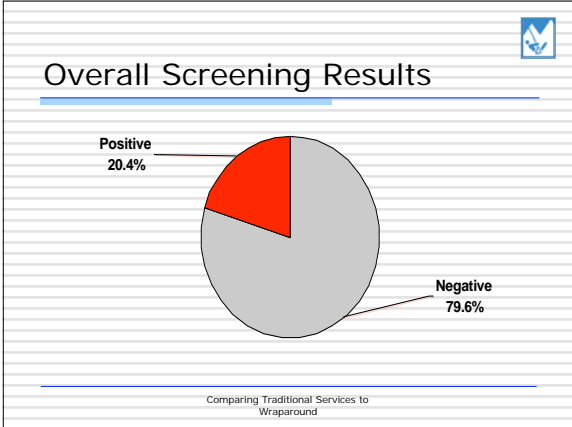
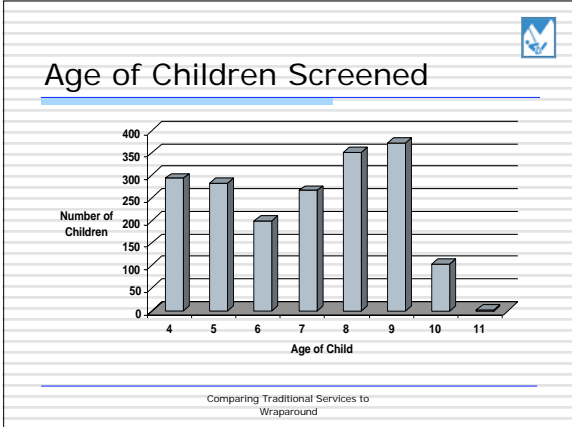
- ☞ Three schools from each of the five regions of the school district
- ☞ The three schools were selected based on economic status of students (e.g. one higher, one mid and one lower)
- ☞ All children in one class for each of the six grades K-5 were screened

## Screening Process

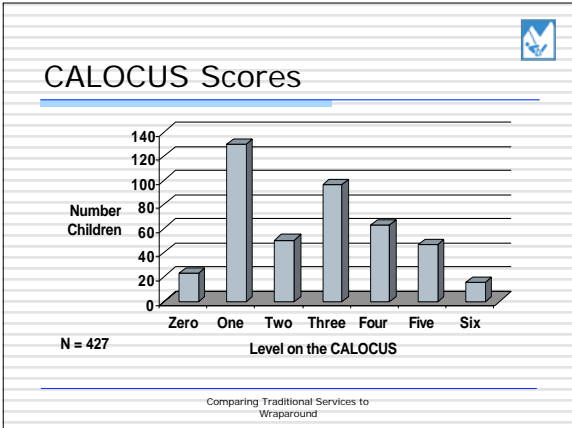
- ⇒ Screening Tools
  - MH Screening Tool
  - CALOCUS
  - Services received report form
- ⇒ Screening Process
  - Staff receive training
  - Teachers complete the screening tool for all children
  - Counselors complete CALOCUS and Services report for all children who score positive on screening

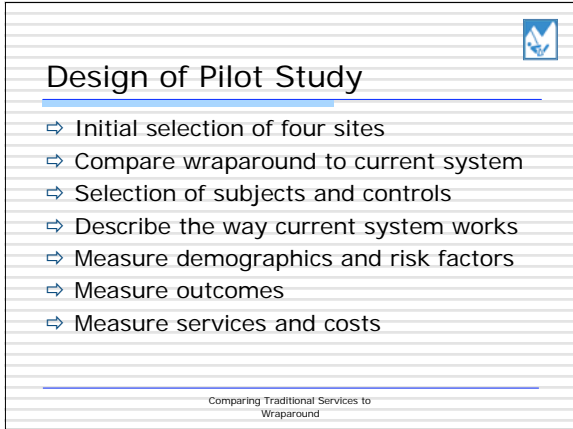
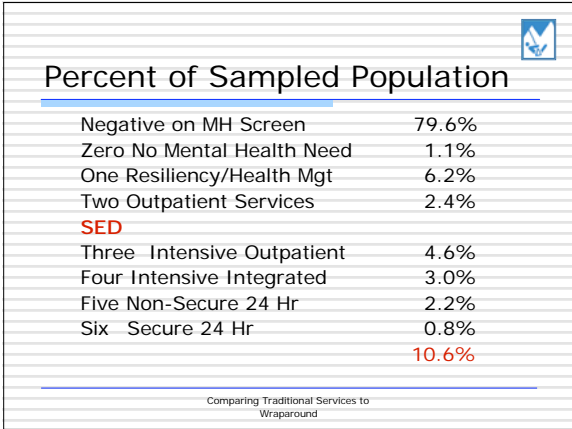
## MH Screening Items

1. Danger to him/herself
2. Severe physical or sexual abuse
3. Child behaviors
4. Bizarre or unusual behaviors
5. Psychotropic medication
6. Problems with social adjustment
7. Problems with healthy relationships.
8. Problems with personal care
9. Functional impairment
10. Problems managing his/her feelings
11. Abuse alcohol and/or drugs



- ### CALOCUS Dimensions
- ⇒ Risk of Harm
  - ⇒ Functional Status
  - ⇒ Co-Morbidity
  - ⇒ Recovery Environment (Stress)
  - ⇒ Recovery Environment (Strengths)
  - ⇒ Resiliency and Treatment History
  - ⇒ Engagement (Parents/Caregivers)
  - ⇒ Engagement (Youth)
- Comparing Traditional Services to Wraparound

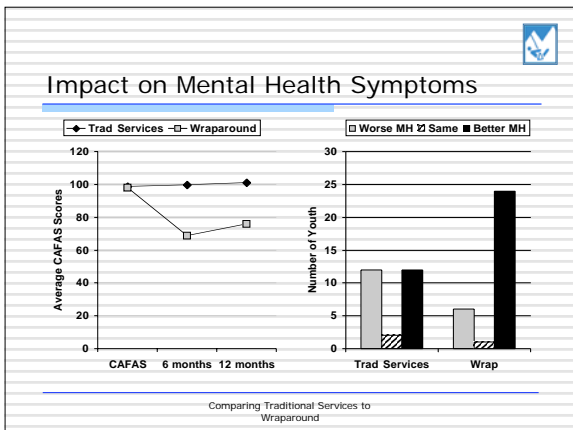
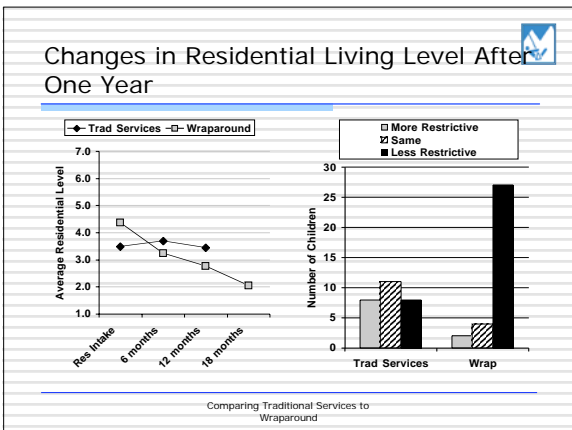
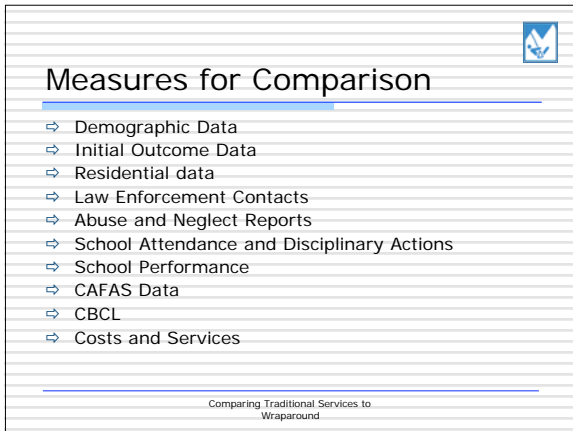


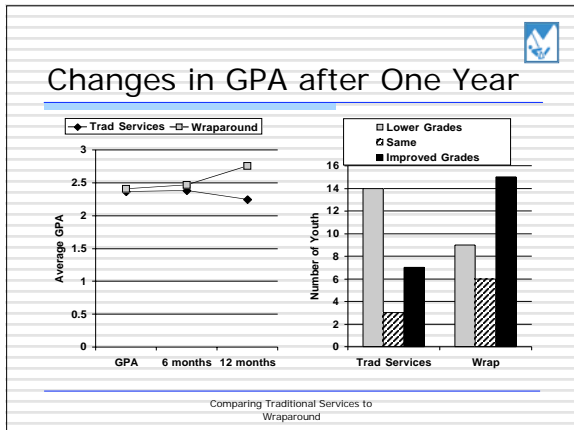


### Study Subjects

	Control Group	Wraparound Group
Age	11.5 years	11.9 years
% Caucasian	54.5%	54.2%
CAFAS	101	102
CGAF	47	46
Residential Level	3.5	4.4
Moves Last 6 Months	1.9	2.4

Comparing Traditional Services to Wraparound





### Services and Supports Provided for WIN Youth

	TOTAL	AVG
Individual Therapy	16	3.3
In Home Family Therapy	02	4.3
Group Therapy	06	6.3
Wraparound Facilitation	33	11.5
Rehabilitative Skills Training (Ind)	14	5.6
Rehabilitative Skills Training (Group)	12	7.9
Medication Mgt	15	1.4
Evaluation and Assessment	4	1.3
Respite	14	2.7
Family to Family Support Services	8	3.8
Placement Prevention Costs	7	1.3
FREE Natural Supports	27	7.2
Rehabilitative Partial Care	4	11.1
<b>Average Different Types of Service Per Youth</b>	<b>5.2</b>	

Comparing Traditional Services to Wraparound

